

Parents as Teachers 2018-2019 Affiliate Performance Report



Parents as Teachers is an evidence-based parent education and family engagement model serving families throughout pregnancy until their child enters kindergarten. Below is a summary of services that were provided by 52 affiliates in PA.

Population Reach

Families Served



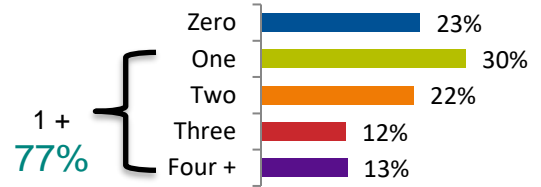
5,156

Children Served

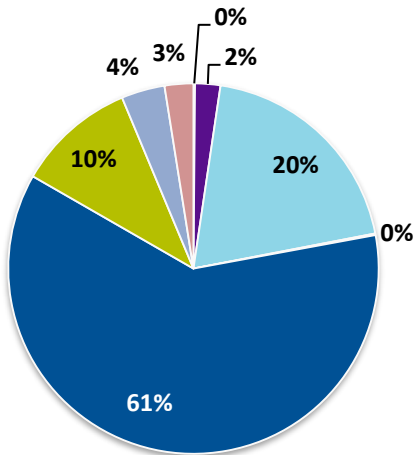


6,819

High Needs Characteristics



Race

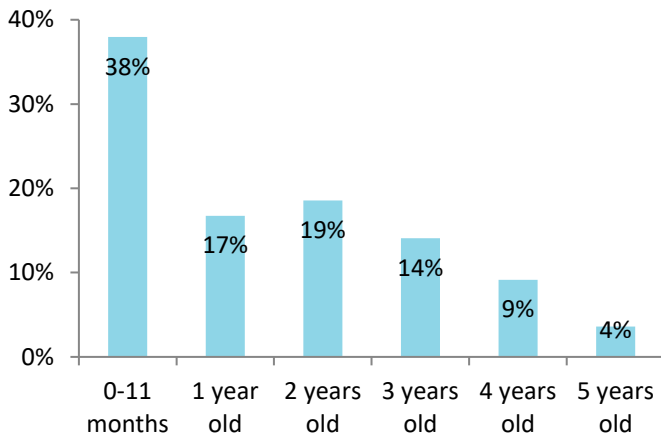


- American Indian/Alaskan Native
- Asian
- Black or African American
- Native Hawaiian/Other Pacific Islander
- White
- Multi-racial
- Other
- Not Answered

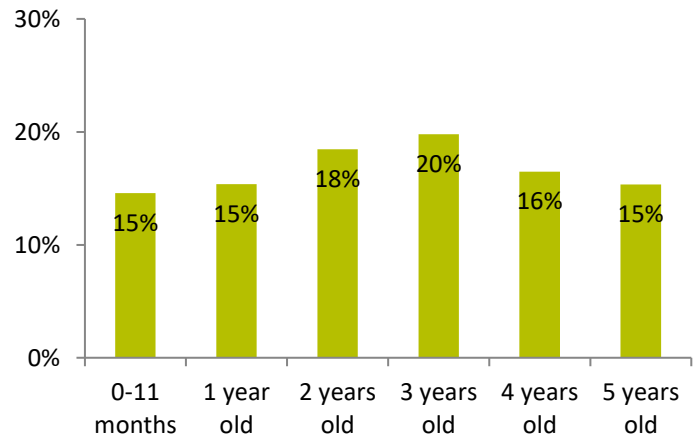
Ethnicity

17.9% Hispanic or Latino
80.3% Non-Hispanic/ Non-Latino
1.77% Not Answered

Child Age at Enrollment



Child Age at End of Program Year



• 12.7% Enrolled Prenatally

Accuracy of the data presented in this report is contingent upon the accuracy of APR data submitted by affiliates.

Program Services and Impact

Personal Visits

63,351



An average of 12.3 per family

Group Connections

Average # of group connections per affiliate = 35

2068 enrolled families attended

Immunizations



93%

of 19 – 35 month olds reported up-to-date

Family-Centered Assessment



Resource Connections



Goals Documented



Developmental Screenings and Health Reviews



724 referred for further assessment based on screening/review
513 received follow-up services

3,260 Potential delays/concerns identified

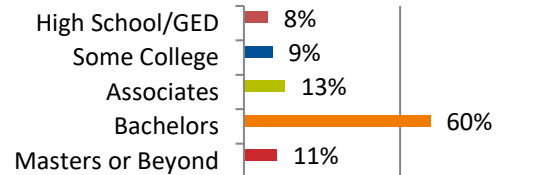
Developmental 1,199
Social-emotional 431
Hearing 959
Vision 390
Physical Health 281

Parent Educators

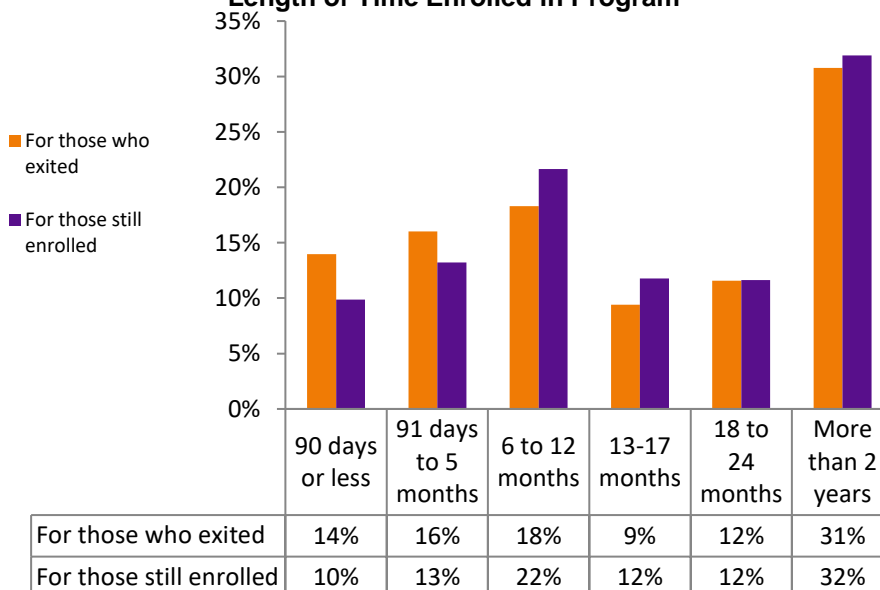


Total 275
Full-Time 234
Part-time 41

Parent Educator Level of Education



Length of Time Enrolled in Program



Waitlist and Family Retention

77% Family Retention Rate

80% Family Retention Rate (excluding families who moved out of service area)

70 Families on waitlist

NOTE: Retention rates are based on one year of data.

Accuracy of the data presented in this report is contingent upon the accuracy of APR data submitted by affiliates.